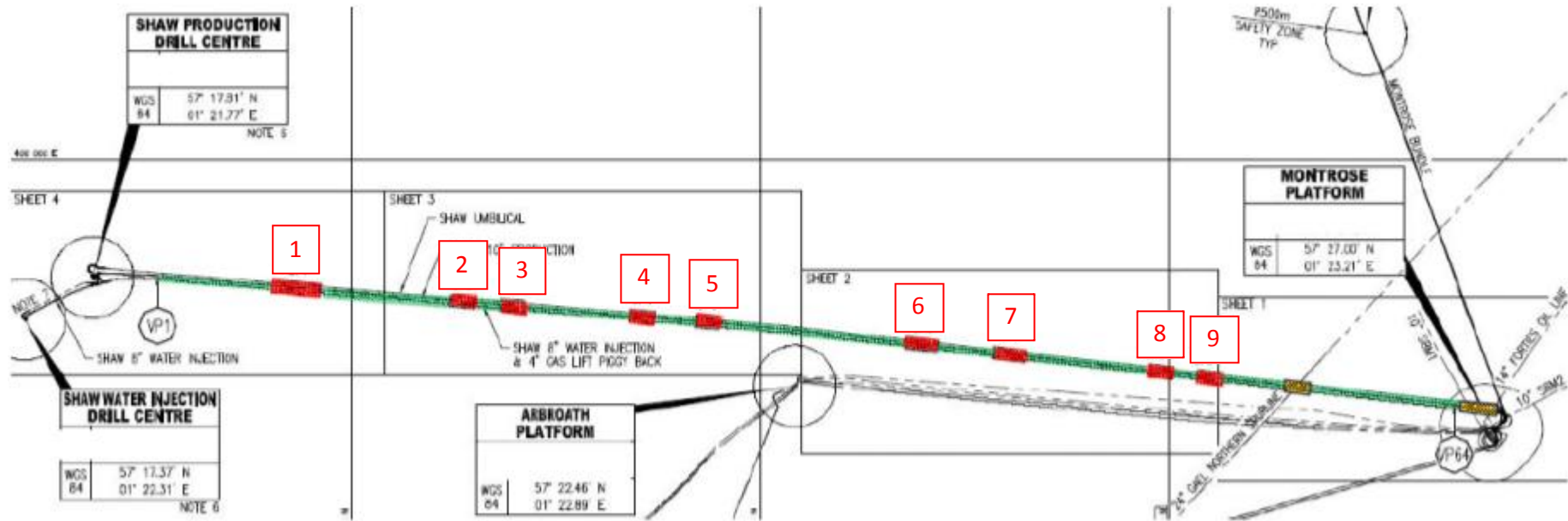


MONTROSE – SHAW PIPELINES OVERTRAWLABILITY TRIALS

In August and September 2016, overtrawlability trials were conducted over the trenched and backfilled Montrose to Shaw Pipelines. Nine gated areas were swept, firstly with the chain mat and then with trawl gear, in an attempt to remove resistance on the seabed and create safe crossing areas which allow normal fishing operations to proceed. Trawling outside of the locations shown below is not recommended.



Gate 1 -	57° 19.00'N, 001° 21.82'E	to	57° 19.32'N, 001° 21.86'E
Gate 2 -	57° 20.17'N, 001° 21.95'E	to	57° 20.33'N, 001° 21.97'E
Gate 3 -	57° 20.50'N, 001° 21.99'E	to	57° 20.66'N, 001° 22.01'E
Gate 4 -	57° 21.36'N, 001° 22.08'E	to	57° 21.52'N, 001° 22.10'E
Gate 5 -	57° 21.79'N, 001° 22.13'E	to	57° 21.95'N, 001° 22.15'E
Gate 6 -	57° 23.18'N, 001° 22.34'E	to	57° 23.40'N, 001° 22.37'E
Gate 7 -	57° 23.76'N, 001° 22.43'E	to	57° 23.97'N, 001° 22.47'E
Gate 8 -	57° 24.78'N, 001° 22.65'E	to	57° 24.95'N, 001° 22.63'E
Gate 9 -	57° 25.10'N, 001° 22.65'E	to	57° 25.26'N, 001° 22.68'E